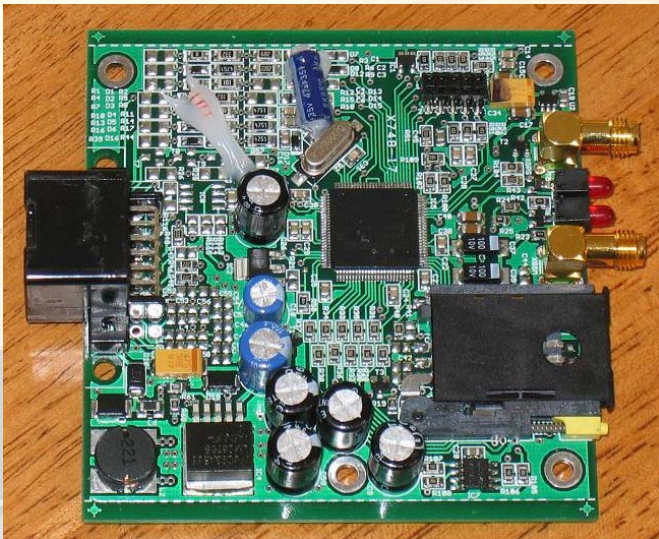


coreIPM®

RM23 Remote Management & Tracking Module

www.coreipm.com



Top



Bottom

coreIPM RM23 Module

coreIPM RM23 Module is a complete solution for secure remote system management and tracking applications. It comes with open source software that can be modified freely.

RM23 Hardware Features

- NXP LPC2368 32-bit ARM7 microcontroller with 512kB on-chip Flash and 58kB SRAM.
- LEADTEK LR9548S GPS MODULE
 - SiRF StarIII chipset
 - 20-channel
- SimCom SIM300D GSM modem
 - Tri-Band GSM/GPRS 900/1800/1900MHz
 - Control via AT commands
- CAN bus I/F
- RS232 port
- GPIO
- 10 pin JTAG
- ADC inputs
- SPI EEPROM

RM23 Software Features

- coreIPM operating environment
- Rich set of peripheral drivers
- TCP/IP stack with: IP, ICMP, UDP, TCP, DHCP, PPP, ARP, SNMP
- RMCP+, SNMP Traps, Serial routing over LAN/Modem & crypto support
- Cipher Suites: HMAC-SHA1-96/AES-CBC-128 for authentication, key exchange, integrity and confidentiality.
- GPRS modem & GPS code.

Licensing

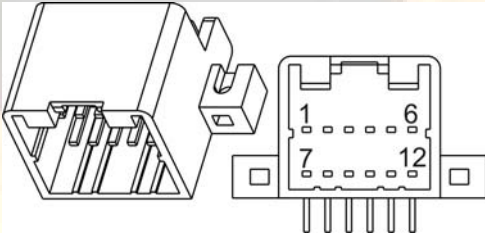
Source code is available under the Open Source GNU General Public License (GPLv2) and commercial licensing. **coreIPM LLC** has full ownership of the source and can provide alternative licensing, reference designs, support, customization and consulting services. Commercial licensees don't have the requirement that their **coreIPM** based software be open sourced.

For further information: info@coreipm.com

coreIPM LLC

20 Tanglewood Drive.
Nashua, NH 03062, USA
+1 603 617 2064

coreIPM is a registered trademark of coreIPM LLC

Drawing		
Connector Type	TYCO	174055-2
Mating Connector Type	TYCO	174045-1
DESCRIPTION OF CONNECTIONS		
Connector Pin No	Function	Cable Color
1	Digital Input0	Pink
2	Digital Input1	Green
3	Digital Input2	Violet
4	GPS output (TTL)	N/C
5	Serial port TX	N/C (Yellow)
6	Serial port RX	N/C(Blue)
7	Digital Input3	Grey
8	Digital Input4 (optional analog input)	Brown
9	(Optional i-button led/buzzer)	Blue
10		White
11	Power Supply (-)	Black
12	Power Supply (+)	Red

(Most pins are software re-assignable for other applications.)